

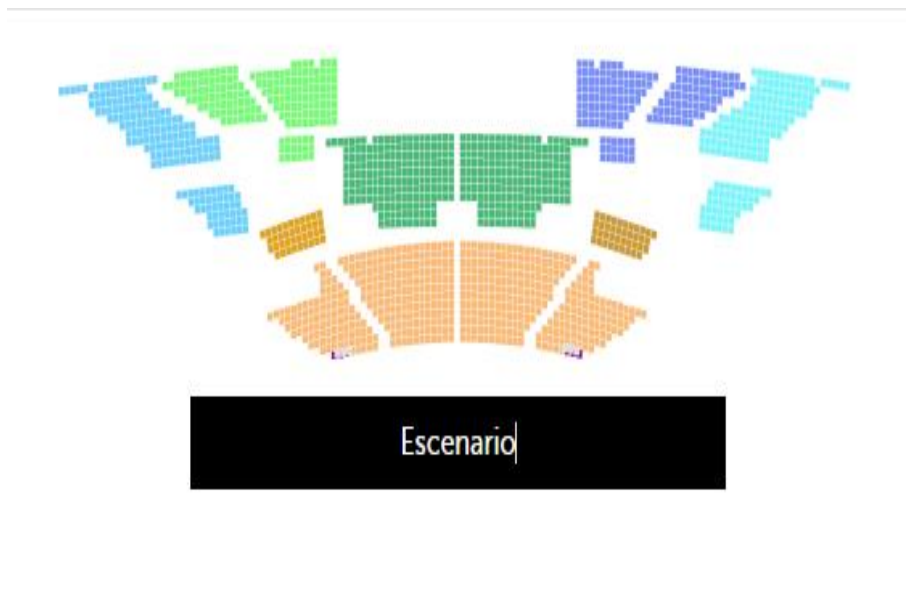


ACCESSIBILITY WOMEX 23

PALACIO DE LA ÓPERA:

Access:

- Entrance through ramp to the main door
- Wheelchair places are in the first row (marked **purple**), 12 spots

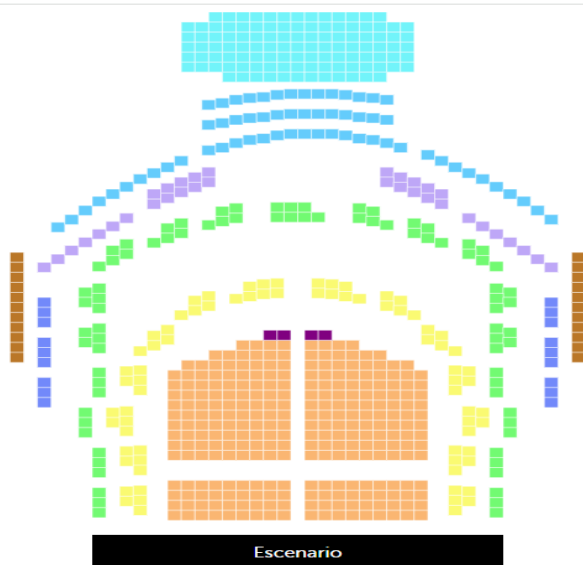
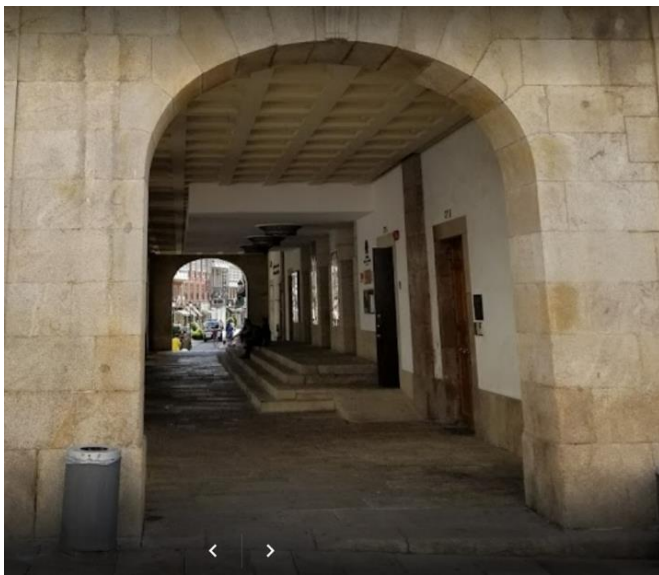




TEATRO ROSALÍA DE CASTRO:

Access:

- Entrance through ramp beside main door (see photograph).
- Wheelchair accessible seats are on the ground floor, last row of the plan (marked **purple**) 4 spots

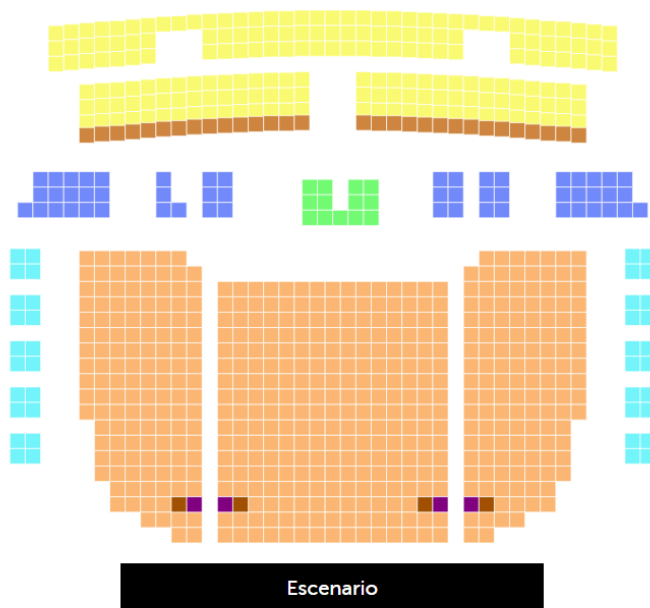




TEATRO COLÓN:

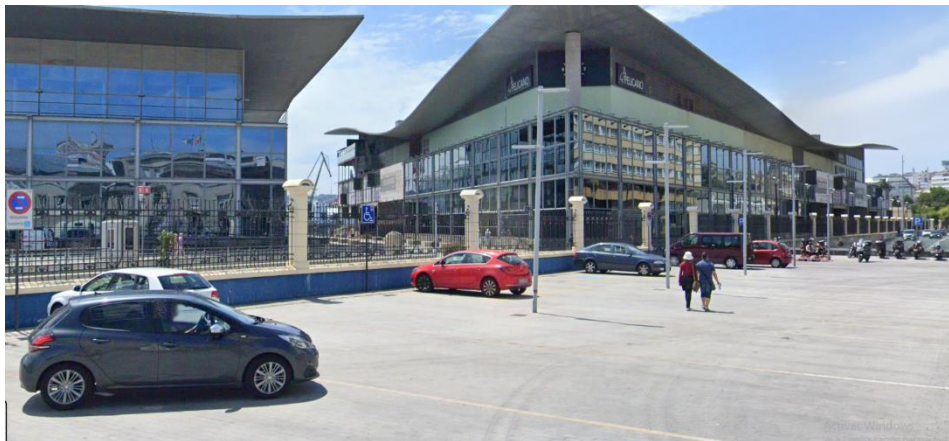
Access:

- Through ramp on the main door (see photograph).
- Wheelchair accessible seats are on the ground floor, third and fourth row (marked **dark brown**), 4 spots





PARKING



Outside parking:

- There are some designated parking spaces outside PALEXCO and Palacio de la Ópera (spots with wheelchair marking)

Please note that PALEXCO also offers wheelchair accessible parking. Unfortunately Cantones (direct access to Teatro Colón door) and Palacio de la Ópera do not offer accessible parking/parking spots, for any further assistance please contact on-site staff or womex@womex.com.